

Status: Pilot

6 Gallon Nylon/Coex w B2S/B2C

Material Structure:

Outer Material: 4.7 Blue-Evoh Coex/BON/LLDPE-LDPE

Middle Material:

Inner Material: 2.0 ULDPE

OTR cc/[100in2-day]

Fitment: For more information on the fitment please contact your local sales rep.

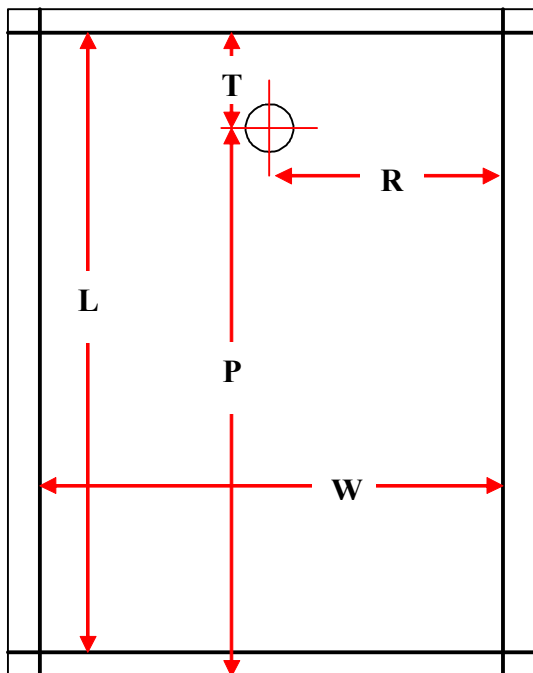
Fitment Assy# B2SFLHD2

Spout Type B2S

Cap Type CA-B2SFLHD2-B2C

Cap Position Full-Cap

Evacuation/
Tube info:



Physical Properties:

Irradiation n/a

Fill Volume:

Max Fill Temp: 140 Degrees F

Bag Weight:

Perf Strength:

Feed Direction:

2nd Fitment if Spec has
Dispensing valve:

2nd Fitment From:
Right Seal (X)
Bottom Seal (Y)

Special Instructions:

Bag Dimensions Target

Bag ID (Width)- (W) 17.75

Bag ID (Length)- (L) 26.00

Spout from Right Seal- (R) 8.875

Spout from Top Seal- (T) 2.50

Spout from Top Perf- (U)

Spout from Bottom Perf- (P)

Tolerance on all dimensions:

Packaging:

Bags per Box: 150

Boxes Per Pallet: 10 Pallet Conf:

Total Pallet Weight:

Total Pallet Dimensions:

Specific Regs:

Food Approvals These bags conform to the requirements of FDA and EU for use in food packaging FDA, CFR Title 21 177.1520

This specification is not a guarantee of the packed product performance. It is the responsibility of the purchaser to prove this product is fit for the purpose intended. Any subsequent Changes to the fill product, outer packaged or packaging process must be advised to AstraPouch® and this product revalidated by the purchaser under the new conditions.

Printed Date:
15-Mar-22



Revision Date:

Revision: